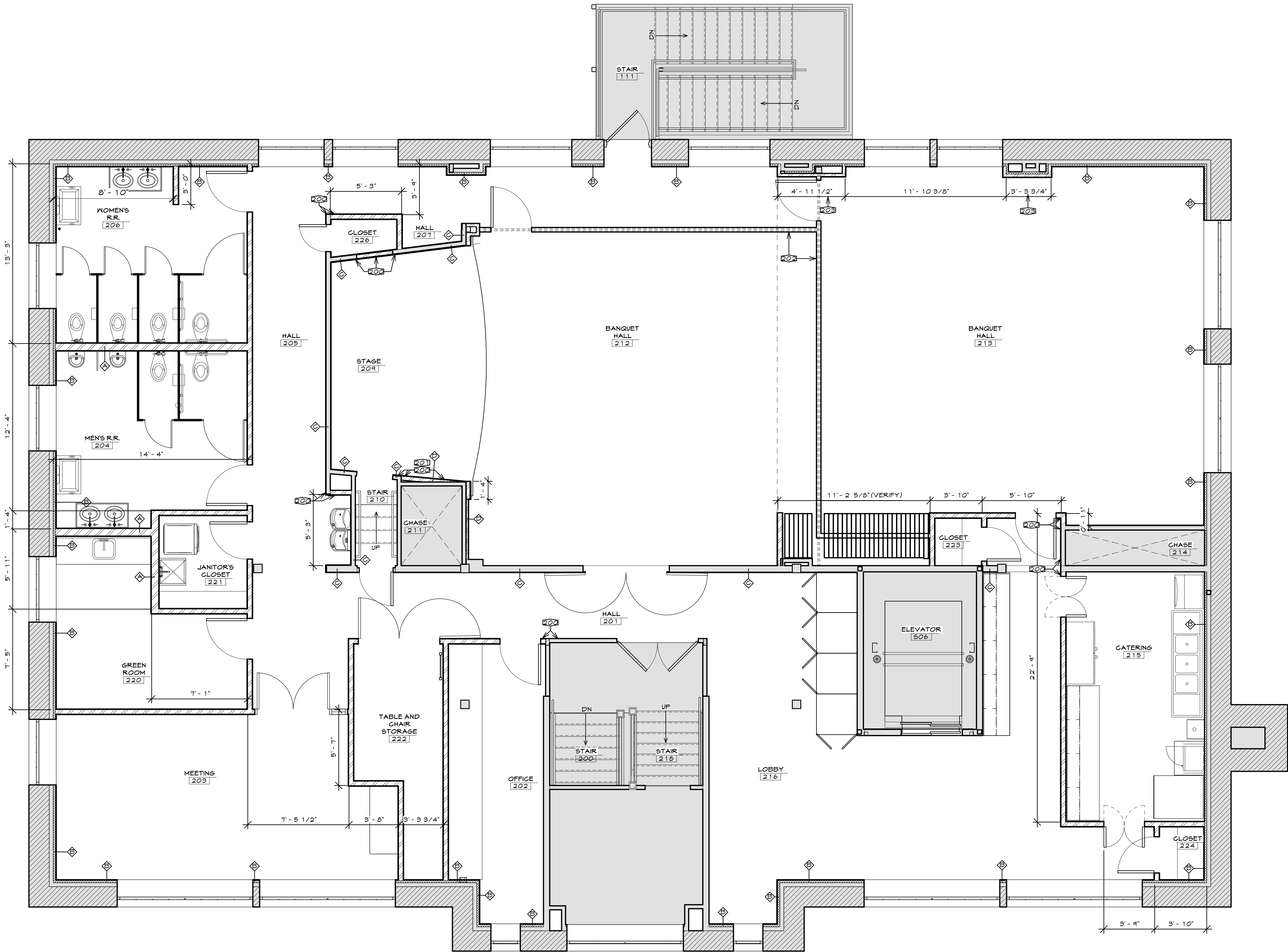
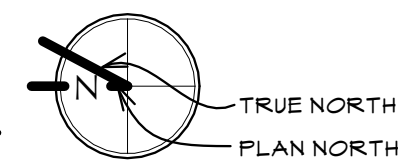


SECOND FLOOR DIMENSION PLAN

SCALE: 1/4" = 1'-0"



GENERAL NOTES

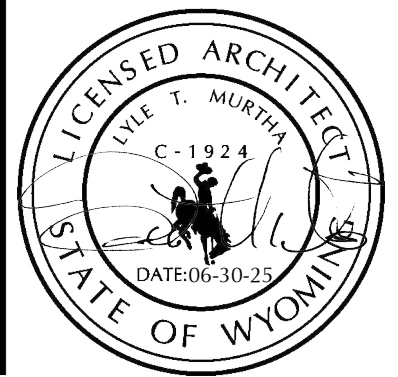
1. GENERAL NOTES AND LEGEND ON THIS SHEET REFER TO SHEETS 3.10 AND 3.15 ONLY.
2. ALL DIMENSIONS ARE TO FACE OF EXISTING FURRING ON MASONRY, OR FACE OF STUDS UNLESS NOTED OTHERWISE.
3. SEE THE STRUCTURAL, MECHANICAL, AND ELECTRICAL DRAWINGS FOR ADDITIONAL INFORMATION.
4. ALL DOOR AND/OR WINDOW SIZES SHOWN ARE NOMINAL. CONTRACTOR TO VERIFY ALL ROUGH OPENING SIZES WITH DOOR/WINDOW SUPPLIER.
5. SEE THE REFERENCE PLAN FOR ADDITIONAL BUILT-IN ITEMS THAT ARE SHOWN ON THIS SHEET BUT ARE DETAILED AND/OR DIMENSIONED ELSEWHERE.
6. SEE THE REFLECTED CEILING PLANS AND INTERIOR ELEVATIONS FOR ADDITIONAL SOFFIT AND/OR HEADER FRAMING NOT SHOWN ON THESE SHEETS.
7. SEE THE REFLECTED CEILING PLANS FOR LOCATIONS OF DRYWALL CONTROL JOINTS.
8. SEE FINISH PLAN NOTES FOR LOCATIONS OF ABUSE - RESISTANT AND MOISTURE - RESISTANT GYPSUM BOARD AND CEMENT BOARD.
9. ALL INTERIOR WALLS TO BE 90 DEGREES OFF OF ADJACENT EXTERIOR WALLS UNLESS OTHERWISE NOTED.

LEGEND

- TYPICAL STEEL STUD WALL - ALL NON-BEARING INTERIOR WALLS TO BE CONSTRUCTED AS FOLLOWS UNLESS NOTED OTHERWISE: 3 5/8" STEEL STUDS AT 16" O.C. WITH FULL BATT INSULATION AND 5/8" GYPSUM BOARD ON EACH SIDE. EXTEND BOTH LAYERS OF GYPSUM BOARD UP TO BOTTOM OF ROOF DECK ABOVE. SEE DETAIL 1/3.15 FOR TYPICAL DEFLECTION HEAD DETAIL AT TOP OF ALL WALLS. PROVIDE ACOUSTICAL SEALANT AROUND WALL PERIMETER AND ALL PENETRATIONS TO FULLY SEAL AND PREVENT SOUND TRANSFER BETWEEN ROOMS.
- STEEL STUD WALL - CONSTRUCT SIMILAR TO TYPICAL STEEL STUD WALL (ABOVE) EXCEPT WITH 6" STEEL STUDS
- EXISTING WOOD FURRING/STONE WALL - CONSTRUCT 2" CONTINUOUS RIGID POLYSTYRENE INSULATION ON TOP OF EXISTING WOOD FURRING AND ONE LAYER OF 5/8" GYPSUM BOARD ON INTERIOR FINISH SIDE
- EXISTING 2x WOOD FRAMED WALL - CONSTRUCT WITH ONE LAYER OF 5/8" GYPSUM BOARD ON EACH FINISH SIDE AND FILL SPACE BETWEEN STUDS WITH FULL BATT INSULATION
- STEEL STUD WALL - CONSTRUCT SIMILAR TO TYPICAL STEEL STUD WALL (ABOVE) EXCEPT WITH 1 5/8" STEEL STUDS AND 1 LAYER OF 5/8" GYP BOARD ON INTERIOR FINISH SIDE

KEYNOTES

- 200 ALIGN FINISH SURFACES
- 201 ANGLE TO MIRROR OPPOSITE SIDE OF STAGE
- 202 OPERABLE WALL, SEE THE REFERENCE FLOOR PLAN
- 203 SEE REFLECTED CEILING PLAN FOR ALIGNMENT OF FURRING WITH SOFFIT ABOVE



OLD STONEY REMODEL
PHASE TWO
120 NORTH 4TH STREET
SUNDANCE, WYOMING 82729



PROJECT NUMBER
16-022

DATE
06-30-25

DRAWN BY
CB

DISK ID.

SHEET TITLE
SECOND FLOOR
DIMENSION PLAN

SHEET NUMBER

3.10